

VIRIDIAN
SITE PLAN KEY

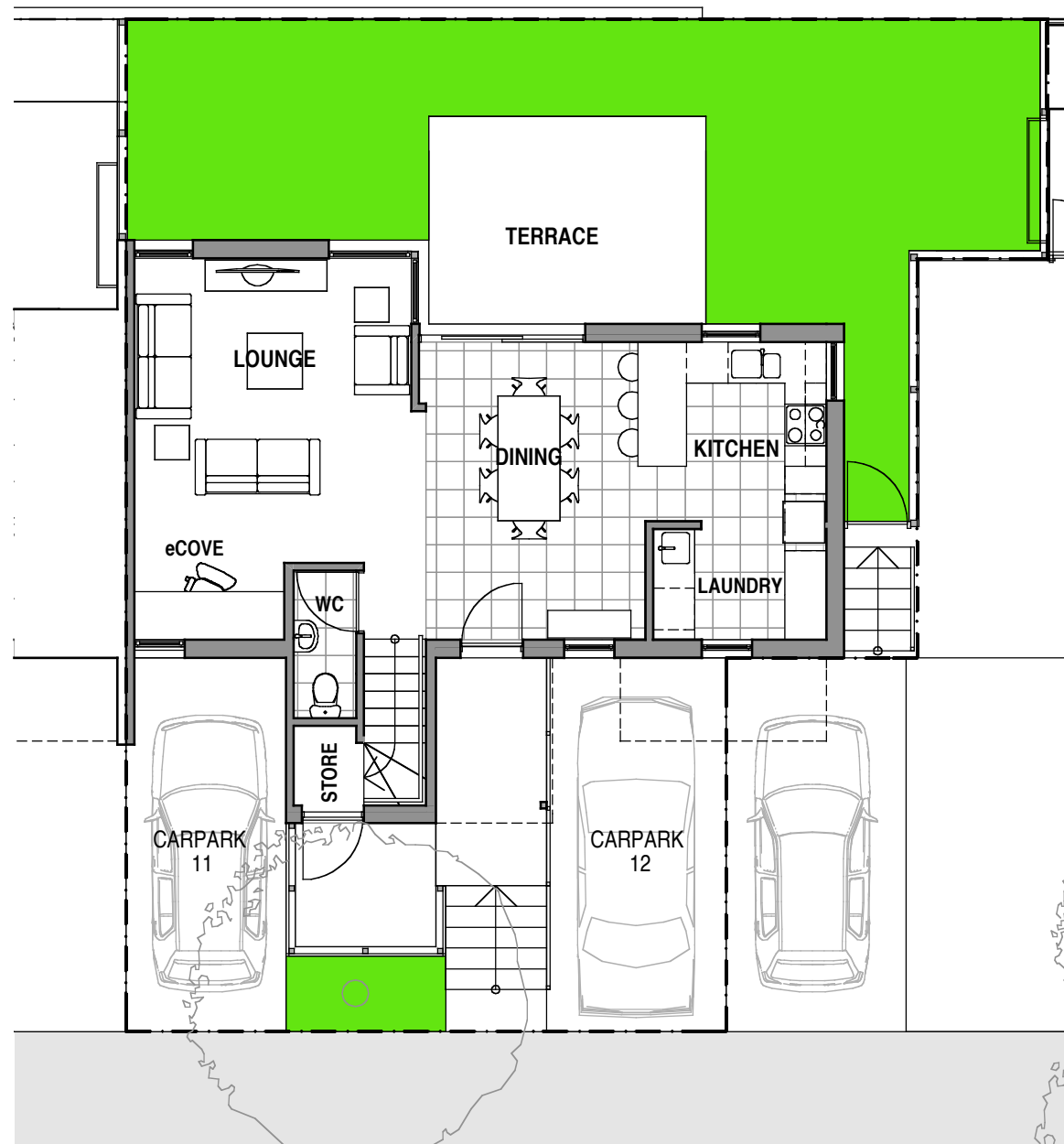
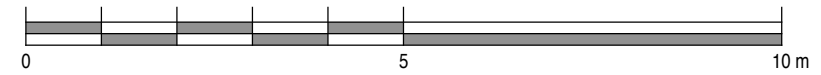
VIRIDIAN
HOUSE 06
TYPE 07

		AREAS	
BEDROOMS:	3	INTERNAL:	107.5 m ²
BATHROOMS:	2	TERRACE:	10.0 m ²
GUEST WC:	1	DECK:	3.6 m ²
PARKING SPACES:	2		
CARPARK No's:	11 & 12	LAND AREA:	159.1 m ²

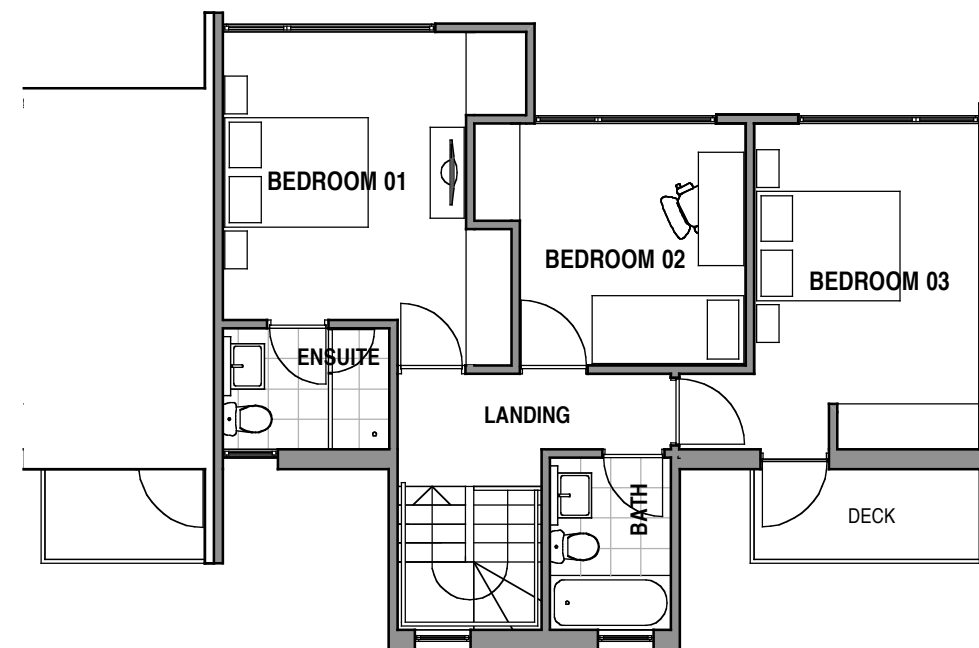
NOTE:

PLANS & DETAILS MAY BE SUBJECT TO VARIATIONS. AREAS ARE APPROXIMATE ONLY.

SCALE



VIRIDIAN - HOUSE 06
GROUND FLOOR PLAN

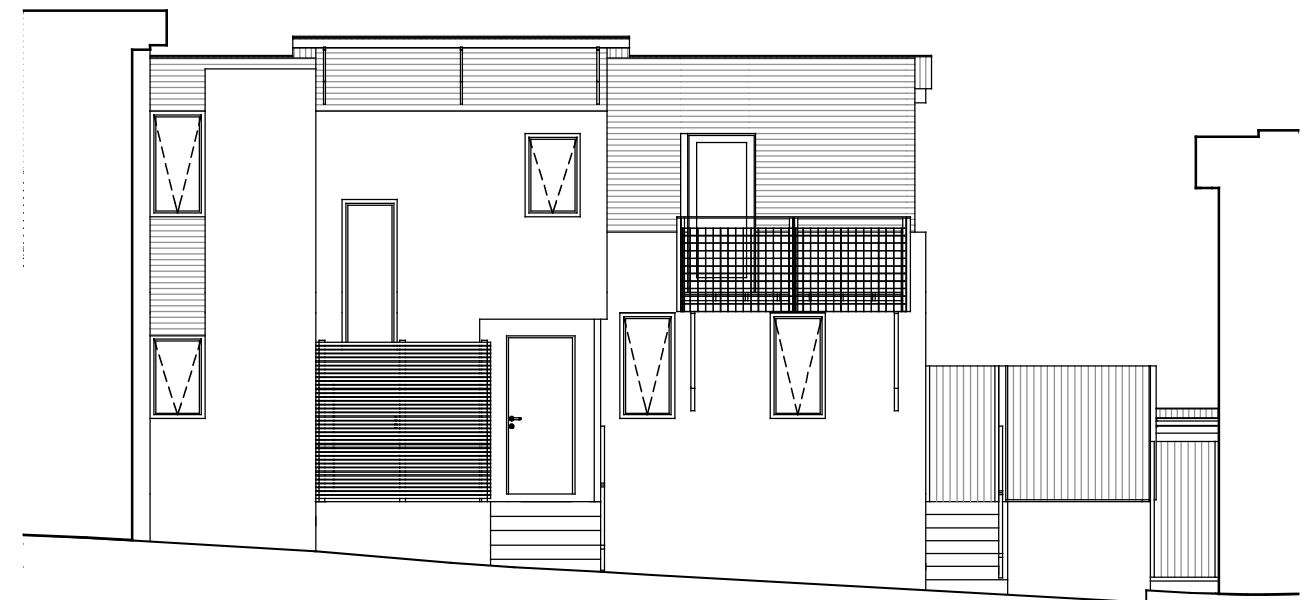


VIRIDIAN - HOUSE 06
FIRST FLOOR PLAN

PROJECT HOUSING DEVELOPMENT 301 MURRAY STREET - HOBART		DRAWING TITLE HOUSE TITLES SETOUT HOUSE 06 PLANS	
82 Warwick Street Hobart GPO Box 725 Hobart 7001 Australia T 03 6231 9593 F 03 6231 9594 email jim@mbaarchitects.com.au	morrison & breytenbach architects P/L		DATE SCALE DWG NO. REV. AUG 2006 AS SHOWN 0406-L06P B
		DATE PRINTED: 18/8/06	

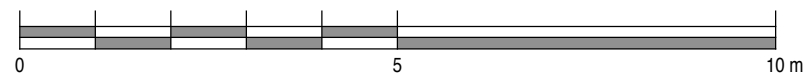


VIRIDIAN - HOUSE 06
NORTH WEST ELEVATION



VIRIDIAN - HOUSE 06
SOUTH EAST ELEVATION (ENTRANCE)

SCALE



PROJECT HOUSING DEVELOPMENT 301 MURRAY STREET - HOBART		DRAWING TITLE HOUSE TITLES SETOUT HOUSE 06 ELEVATIONS			
82 Warwick Street Hobart GPO Box 725 Hobart 7001 Australia T 03 6231 9593 F 03 6231 9594 email jim@jimbarchitects.com.au		DATE AUG 2006	SCALE AS SHOWN	DWG NO. 0406-L06E	REV.
morrison & breytenbach architects P/L		DATE PRINTED: 18/8/06			