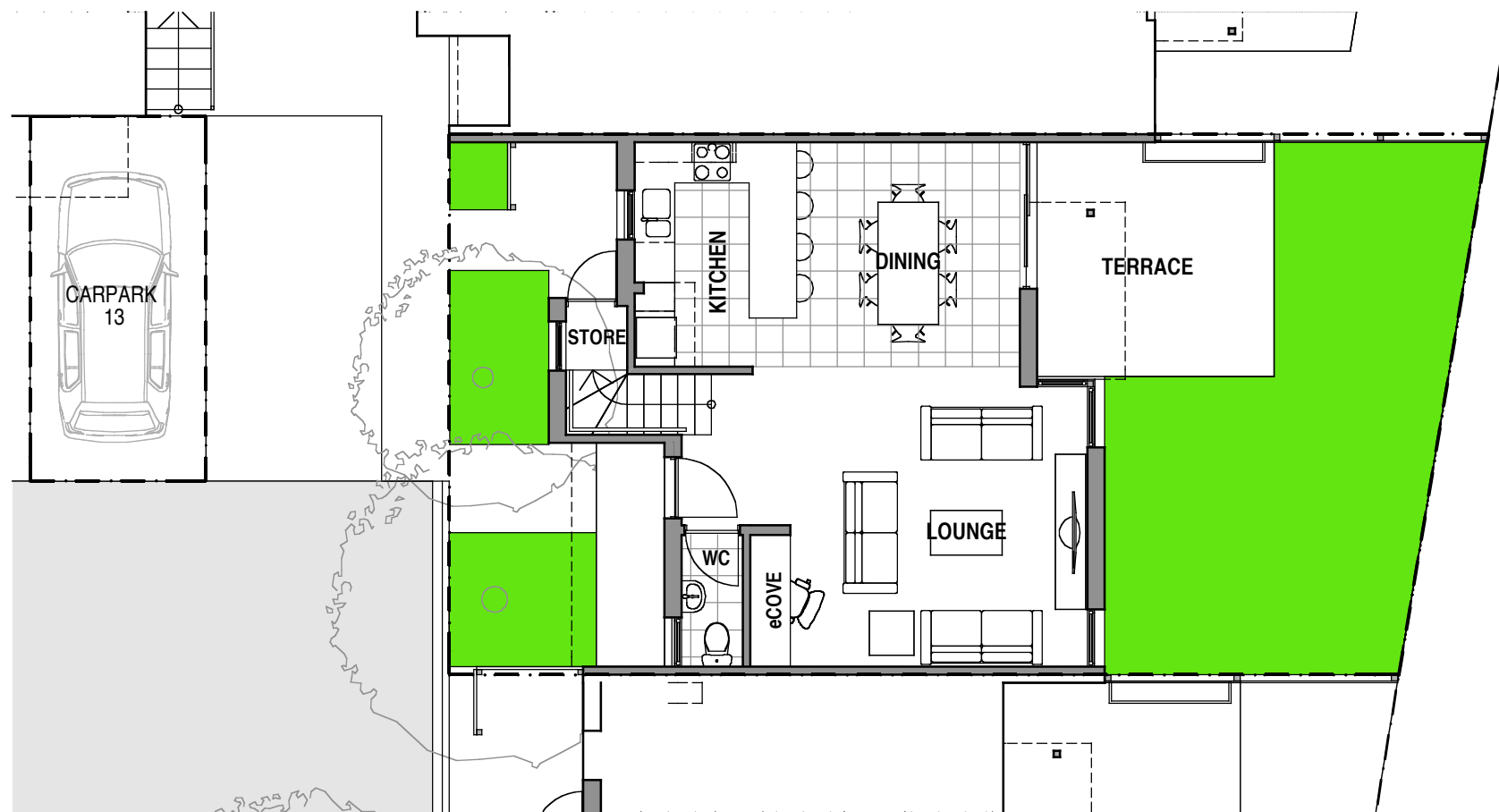
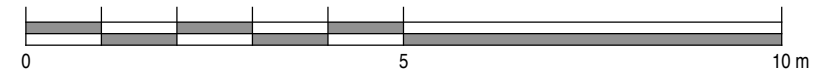


VIRIDIAN
HOUSE 08
TYPE 04

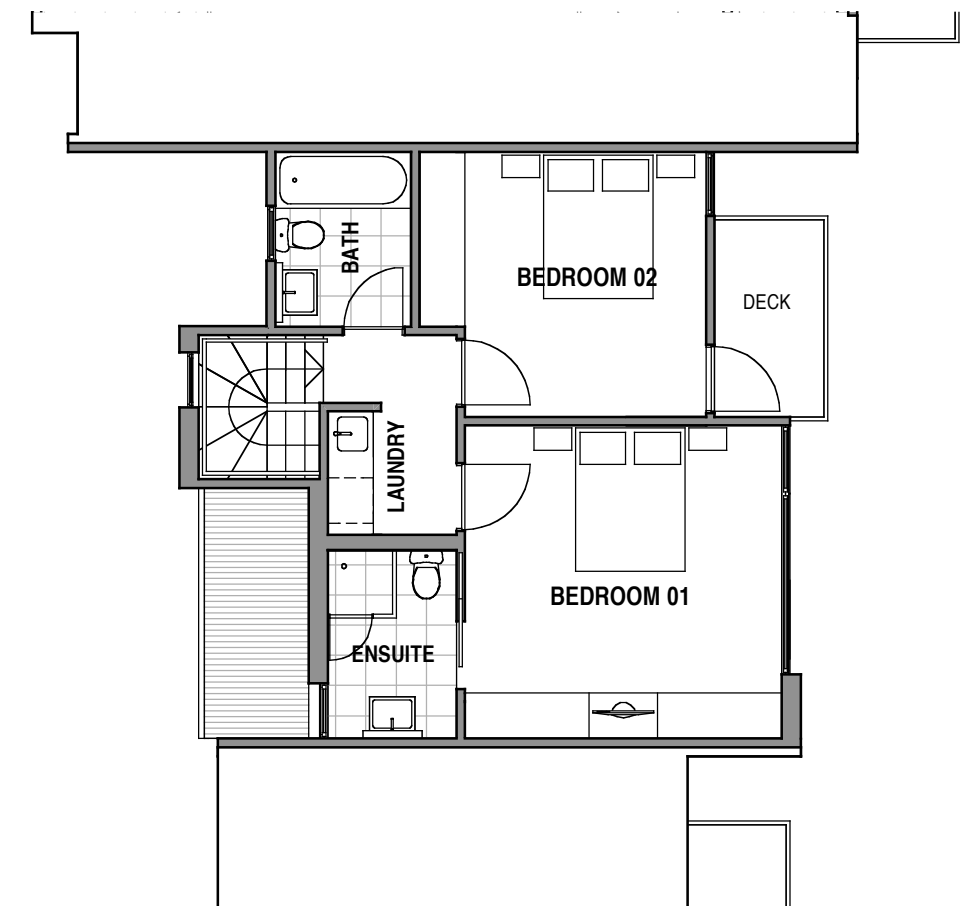
		AREAS	
BEDROOMS:	2	INTERNAL:	94.4 m ²
BATHROOMS:	2	TERRACE:	12.1 m ²
GUEST WC:	1	DECK:	3.8 m ²
PARKING SPACES:	1		
CARPARK No's:	13	LAND AREA:	132.1 m ²

NOTE:
PLANS & DETAILS MAY BE SUBJECT TO VARIATIONS. AREAS ARE APPROXIMATE ONLY.

SCALE



VIRIDIAN - HOUSE 08
FIRST FLOOR PLAN

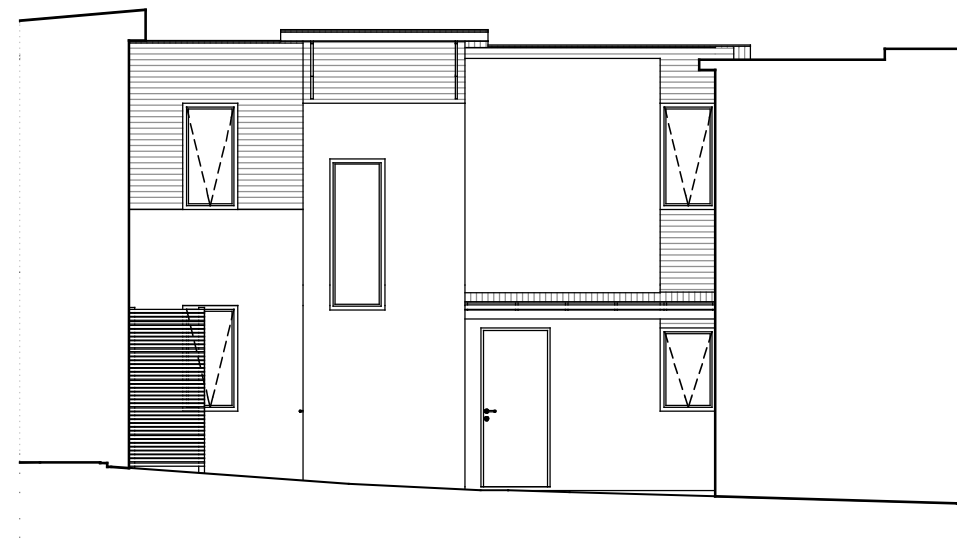


VIRIDIAN - HOUSE 08
GROUND FLOOR PLAN

PROJECT	HOUSING DEVELOPMENT 301 MURRAY STREET - HOBART			DRAWING TITLE	HOUSE TITLES SETOUT HOUSE 08 PLANS		
82 Warwick Street Hobart GPO Box 725 Hobart 7001 Australia T 03 6231 9593 F 03 6231 9594 email jim@mbaarchitects.com.au	morrison & breytenbach architects P/L			DATE	SCALE	DWG NO.	REV.
				AUG 2006	AS SHOWN	0406-L08P	
				DATE PRINTED: 18/8/06			

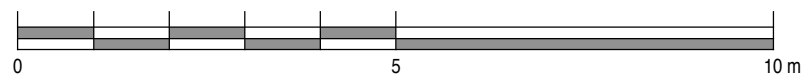



VIRIDIAN - HOUSE 08
NORTH EAST ELEVATION



VIRIDIAN - HOUSE 08
SOUTH WEST ELEVATION (ENTRANCE)

SCALE



PROJECT HOUSING DEVELOPMENT 301 MURRAY STREET - HOBART		DRAWING TITLE HOUSE TITLES SETOUT HOUSE 08 ELEVATIONS			
82 Warwick Street Hobart GPO Box 725 Hobart 7001 Australia T 03 6231 9593 F 03 6231 9594 email jim@jimbarchitects.com.au	 morrison & breytenbach architects P/L	DATE AUG 2006	SCALE AS SHOWN	DWG NO. 0406-L08E	REV.
		DATE PRINTED: 18/8/06			